

Proposal:

Combine the Intermediate and Competitive divisions so the league would consist of two divisions:

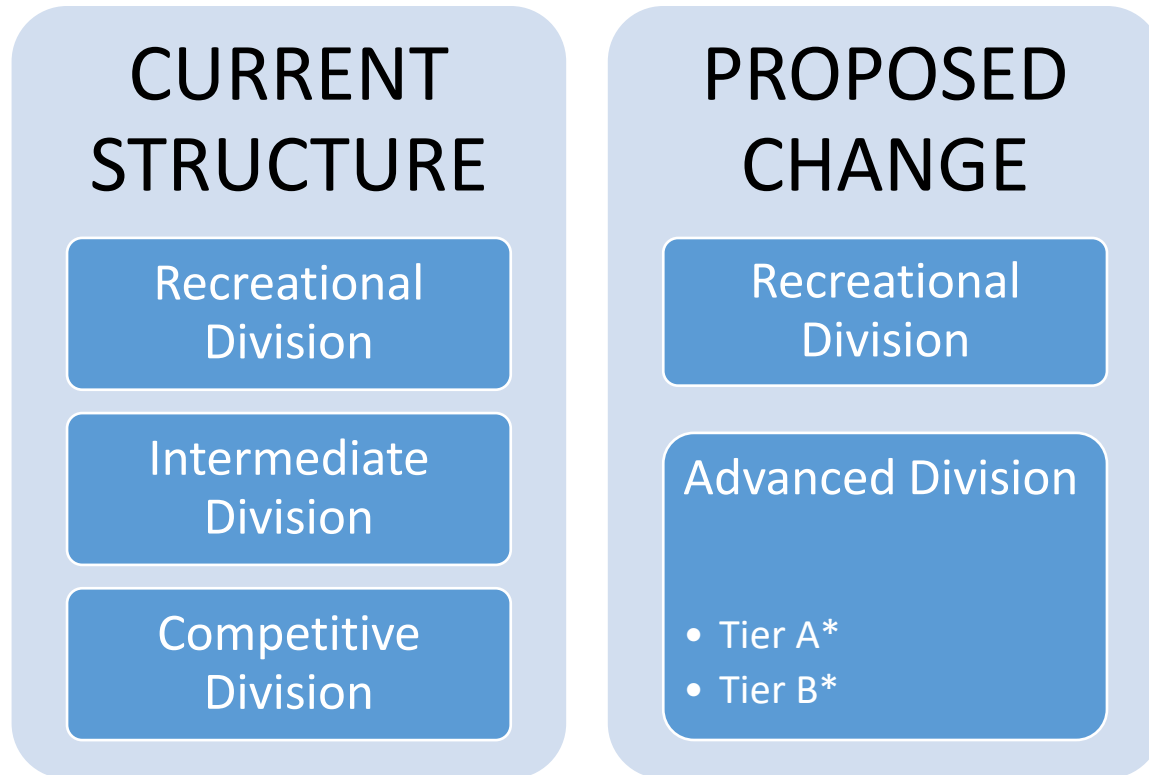
Recreational Division – teams of new players, developing, purely social teams

Advanced Division – more structured, higher skill levels, softball-focused teams

Before the finals, teams in the Advanced Division would be seeded into two tiers (Tier A and Tier B), based on how they performed during regular season.

The schedule would be accommodated so that the bottom two teams do not play the upper two teams in the division (most likely including teams who have newly moved up to Advanced).

The bottom two teams of the Advanced Division could play cross-divisional games with the Recreational Division.



*(determined by league standings, before finals tournament)

A Note On Safety:

- To promote team decisions to ladder into the Advanced Division, it is proposed that the bottom two teams are protected from playing the top two teams for the duration of the season.
- This would mean that the bottom two teams would automatically be in Tier B for the finals.